

Pump BF-E

Product description

Application

Suitable everywhere lubrication grease is to be fed with high pressure straight from the barrel.

Product characteristics

- + Electrically drive drum pump
- + Discharge: max. 100 cm³/min (3000 r.p.m.)
- + Discharge pressure: max. 320 bar
- + Lubricant: Grease
- + Surface signal grey RAL 7004

Advantages

- + Simple in design and operation
- + Problem-free exchanging of barrels
- + Safe emptying of barrel thanks to an integrated follower piston
- + Extension or modification of existing plants without any problem
- + Central lubrication of more than 1,000 points

Function

The pump BF-E has an electric and a hydraulic section. The electric motor feeds oil to the hydraulic system via a gear pump.

Upon reaching a max. pressure of 10 bar the oil is allowed to return to the reservoir. The hydraulic motor motion is transmitted to the grease pump feed piston. At the upward stroke of the piston the lubrication grease is sucked and transferred on the pump outlet port. The max. discharge pressure attainable is 320 bar. (i.e. hydraulic pressure multiplied by the internal ratio).



Drum size 200 liter

DELIMON GMBH

(+49) 211 7774-0 TELEFON
(+49) 211 7774-210 FAX

WWW.BIJURDELIMON.COM

Arminstraße 15
40227 Düsseldorf

Technical Data

Discharge pressure	max.	320 bar
Pressure switch	set to 320 bar	(adjustable from 100 to 400 bar)
Discharge volume , optional, depending on driving speed	at n = 1500 min ⁻¹ at n = 3000 min ⁻¹	50 cm ³ (3,0 l/h) 100 cm ³ (6,0 l/h)
Usable lubricants based on mineral oil	Grease up to NLGI class 2	(base oil viscosity max. 200 cSt based on mineral oil), DIN 51818
Oils and other media		on request
Transmission media	P1 (lubricant) = 45	P2 (hydraulics) = 1
Hydraulic pressure	max.	10 bar
Hydraulic oil at ambient temperature		= 0°C, H-L 22 DIN 51524 part 1 = 0°C, H-L 10 DIN 51524 part 1
Oil filling	liter	24
Drive motor	three-phase current according to DIN 42677, (observe rotational direction) IMB 14-71-C 105; 0.25 kW x 1500 U/min or IMB 14-71-C 105; 0.55 kW x 3000 U/min	
Voltage	230/400V, 50 Hz / 260/460V, 60 Hz; other voltage, frequency and speed on request	
Ambient temperature	- 20° C up to + 50°C	
Protection system	IP 44	
Weight	(without oil filling)	42 kg
Application	centering lid and follower plate according to DIN 6643/44 for rolling hoop lid drums 200/216 liter, and/or rolling channel lid drums 200/216 liter	

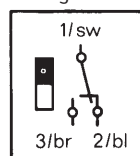
The degree to which the drum is emptied depends on the lubricant to be delivered and the ambient temperature.

Electrical data of the contents control

Kind of contact	1 change-over switch
Switching capacity	ON 60 VA
Switching current	ON 0.24 A
Voltage max.	250 V AC
Basis adjustment of contact making with a drum capacity of approx.	10 liter drum capacity
Adjusting range	0 - 20 liter drum capacity
Protection system	IP 65

Circuit symbol

Change-over switch, figure: reservoir level > min



DELIMON GMBH

(+49) 211 7774-0 TELEFON
(+49) 211 7774-210 FAX

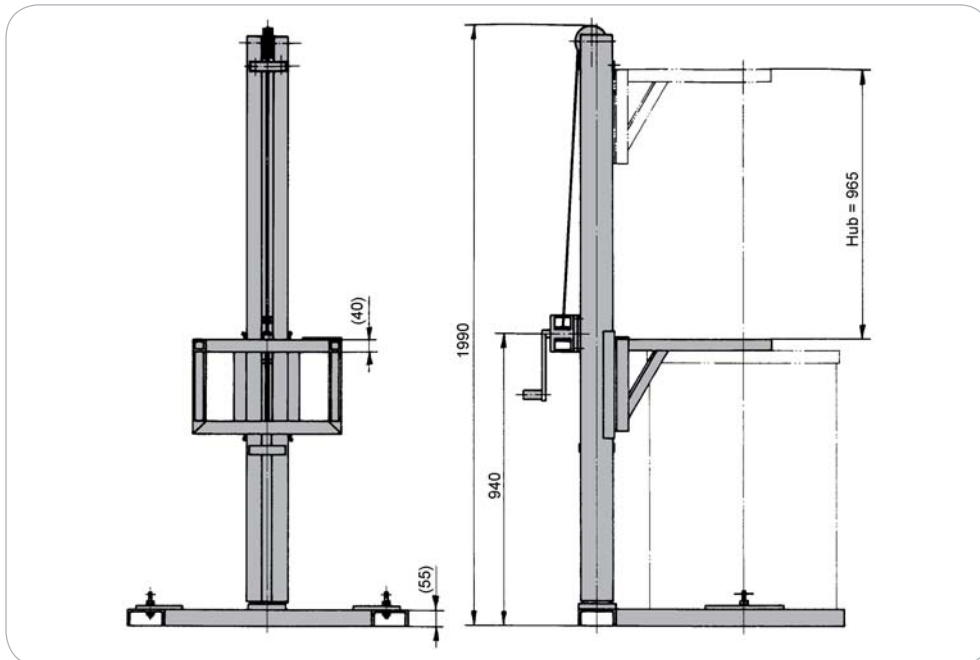
WWW.BIJURDELIMON.COM

Arminstraße 15
40227 Düsseldorf

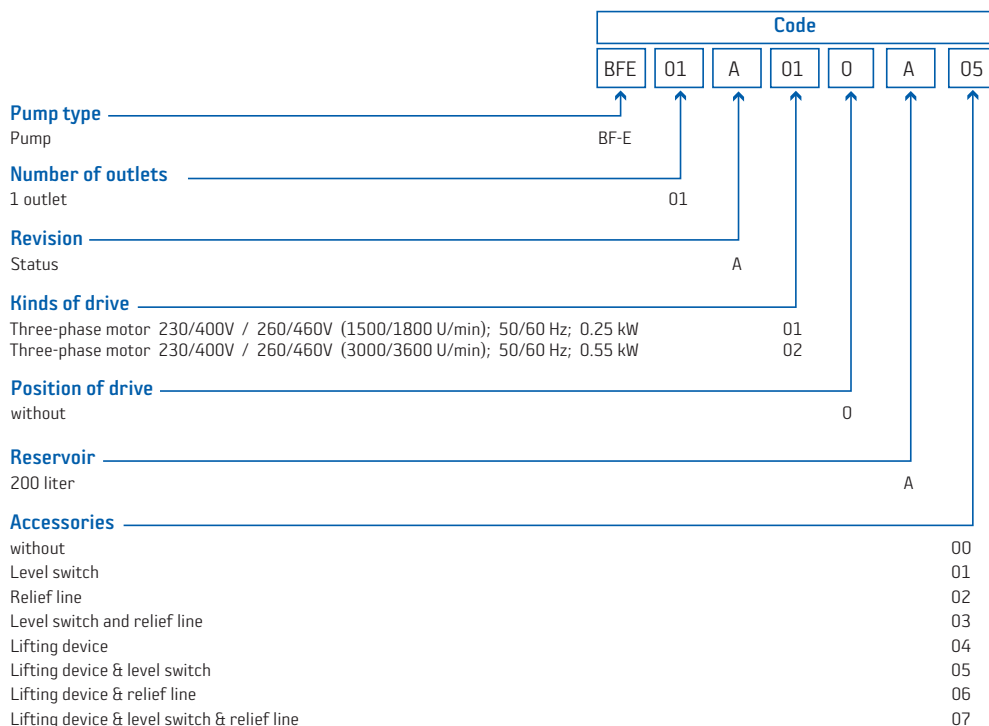
P_2017_1_GB_BFE

Accessories

Lifting device



How to order



Example of order:

BFE 01 A 01 0 A 05

Pump BF-E, 1 outlet, three-phase motor, 200 liter drum size, lifting device & level switch.

DELIMON GMBH

(+49) 211 7774-0 TELEFON
(+49) 211 7774-210 FAX

WWW.BIJURDELIMON.COM

Arminstraße 15
40227 Düsseldorf

P_2017_1_GB_BFE

DELIMON GMBH

(+49) 211 7774-0 TELEFON
(+49) 211 7774-210 FAX

WWW.BIJURDELIMON.COM

Arminstraße 15
40227 Düsseldorf