

# PM Pump

## PM45 & PM60 Air-operated, Grease

### General

The PM Pump is a compressed air-operated reciprocating piston pump. This high capacity demand pump is compatible with mineral and synthetic grease and suitable for large installations with long length piping supplying several fluid outlets simultaneously. This pump is mounted directly on 120 lb and 400 lb drums or bulk tote.

### Operation

This pump is self-priming. To prime it the first time, it is convenient to connect the air supply to the pump while keeping the outlet gun opened and slowly increase the air pressure by using a pressure regulator. Once grease starts flowing through all the outlets, the pump is primed. The pump starts to pump when an outlet valve is opened, for example a grease control gun.

### Technical Data

Minimum Air Pressure	20 psi (1.5 bar)	
Maximum Air Pressure	100 psi (7 bar) or 200 psi (14 bar) See How to Order Chart	
Maximum Delivery	4.5, 5.5, 7.5, 13.5 & 33 lbs /min (see How to Order Chart)	
Air Inlet Thread	1/2" NPT (F)	
Grease Outlet Thread	1/2" NPT (F) (1"NPT(F) 12:1 Grease Transfer)	
Air Motor Effective Diameter	PM45:	4-1/2" (115mm)
	PM60:	6" (150mm)
Air Piston Stroke	4" (100mm)	
Grease	NLGI-2	



PM Pump P.N. F532811

### How to Order

Description	Air Motor Size	Container Type	Pump Ratio	Max Air Pressure	Flow Rate*	Part #
PM45-25A ■	4-1/2"	400 lb	25:1	200 psi	13.5 lb/Min	F531211
PM45-40A	4-1/2"	400 lb	40:1	200 psi	7.5 lb./Min	F531411
PM45-40B	4-1/2"	120 lb	40:1	200 psi	7.5 lb./Min	F531421
PM45-40C ◆	4-1/2"	Bulk Tote	40:1	200 psi	7.5 lb./Min	F531431
PM45-70A	4-1/2"	400 lb	70:1	100 psi	4.5 lb/Min	F531711
PM45-70B	4-1/2"	120 lb	70:1	100 psi	4.5 lb/Min	F531721
PM45-70T ◆	4-1/2"	Bulk Tote	70:1	100 psi	4.5 lb/Min	F531731
PM60-80A	6"	400 lb	80:1	100 psi	5.5 lb/Min	F532811
PM60-80B	6"	120 lb	80:1	100 psi	5.5 lb/Min	F532821
PM60-12T ▲ ◆	6"	Bulk Tote	12:1	100 psi	33.0 lb/Min	F532131

\* Flow rates @ 100 psii (7 bar) air inlet pressure

■ A Medium Pressure Lubricant Pump designed to deliver a range of heavy gear oils and light body greases up to NLGI 2.

◆ These Stubby Pumps include the male portion of a 3-inch camlock connection (length: 3.15"-80 mm) for easy installation in Bulk totes.

▲ Medium Pressure Transfer Pump designed to deliver a range of greases up to NLGI 2 from Bulk totes to small containers.

When ordering, specify by name, description and part number, e.g. PM Pump, 120 lb Drum, Part #F531421.

See page 4 for accessories and dimensions.

#### BIJUR DELIMON INTERNATIONAL

(919) 465 4448 LOCAL  
(800) 631 0168 TOLL-FREE  
(919) 465 0516 FAX

[WWW.BIJURDELIMON.COM](http://WWW.BIJURDELIMON.COM)

1 Copley Parkway, Suite 104  
Morrisville, NC 27560

**36407 • R3 08/21**

# PM Pump

## PM45 & PM60 Air-operated, Grease

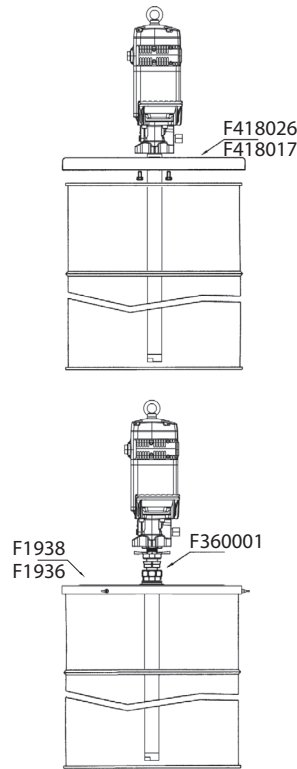
### Drum Installation

#### Mounting with Reinforced Cover (Recommended)

It is recommended to install this pump on a drum using a reinforced cover due to weight considerations, but it is possible to install two different ways. Mount with reinforced cover (part #F418026 for 400 lb drum and part #F418017 for 120 lb drum). Insert pump through the cover and fasten it with the enclosed screws. Insert the pump through the bung opening and fasten the cover onto the drum firmly.

#### Mounting with Bung Adapter

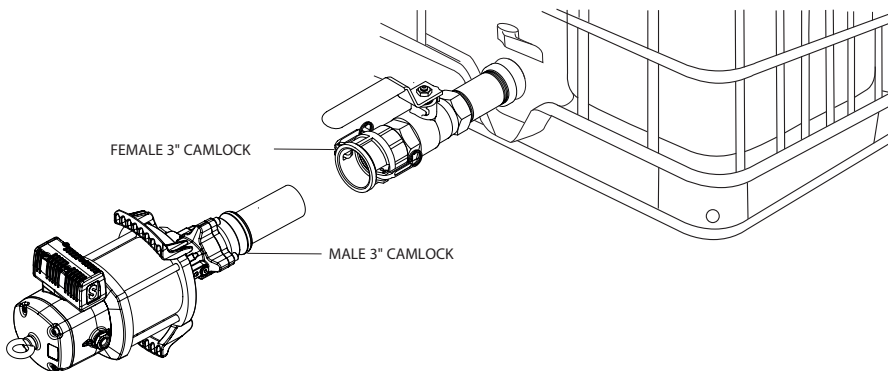
Mount with bung adapter (part #F360001). Fasten the cover (part #F1938 for 400 lb drum and part #F1936 for 120 lb drum) onto the drum and screw the nut of the bung adapter securely into the 2" bung opening of the cover. Insert the pump through the nut and adjust it with the star nut to the desired height.



PM Pump P.N. F531411

### Tote Installation

In most cases this pump connect horizontally to a bulk container. The pump bundles the male part of a 3" camlock adapter which will connect to an existing female part on the container.



Bulk Tote PM Pump P.N. F531731

BIJUR DELIMON INTERNATIONAL

(919) 465 4448 LOCAL  
(800) 631 0168 TOLL-FREE  
(919) 465 0516 FAX

[WWW.BIJURDELIMON.COM](http://WWW.BIJURDELIMON.COM)

1 Copley Parkway, Suite 104  
Morrisville, NC 27560

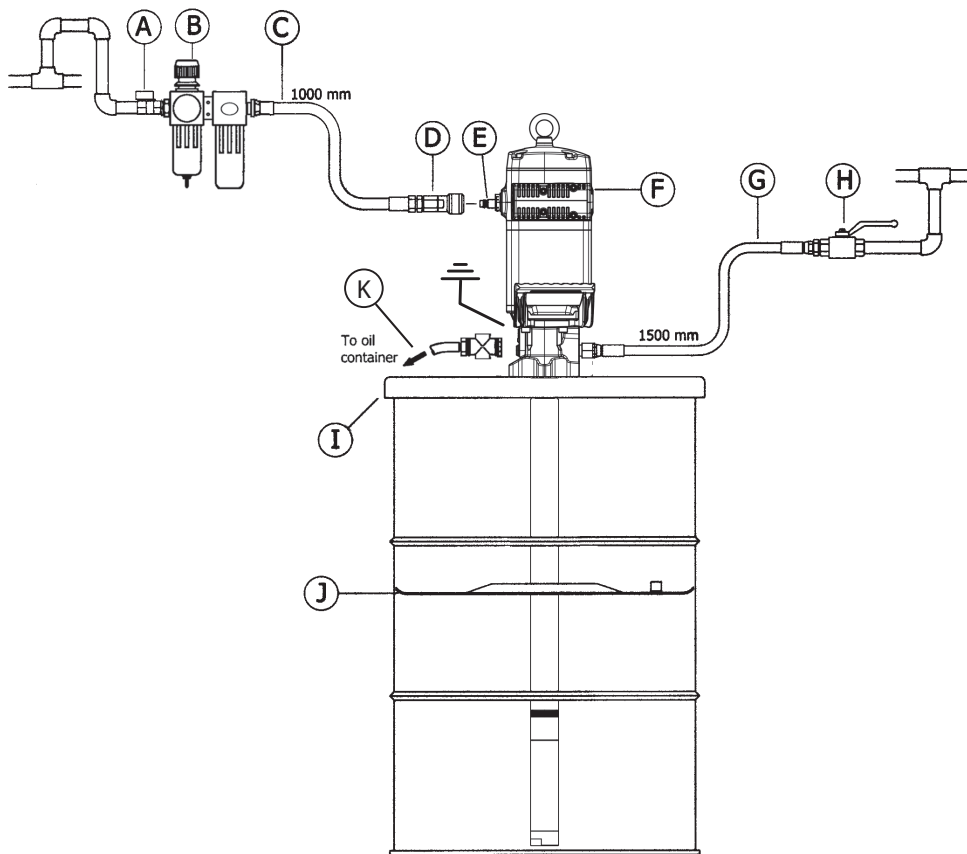
36407 • R3 08/21

# PM Pump

## PM45 & PM60 Air-operated, Grease

### Typical Layout

The drawing below is a typical layout shown with all the recommended accessories for the pump to operate correctly. The compressed air supply must be fixed between 20 and 200 psi (1.5 and 14 bar). The recommended pressure is 90 psi (6 bar). An air shut-off valve must be installed to be able to close the compressed air line at the end of the day (if the air inlet is not closed and there is leakage in some point of the grease outlet circuit, the pump will start automatically, emptying the container).



**ATTENTION**

Always keep fingers and hands away from moving parts. Do not dent or damage the riser tube.

**ATTENTION**

Do not ever lay the pump on the floor or allow the grease covered pump tube to become contaminated in order to prevent damage to the internal seals of the pump.

Item	Part Number	Description
A	39640	Air shut off valve
B	F985	Filter/Regulator/Lubricator
C	F822	Air hose
D	F938F08	Quick coupling
E	F947M08	Connection nipple
F	F531421 (120lb) / F531411 (400lb)	Pump
G	F884	Grease hose
H	37161	Grease shut off valve
I	F418017 (120lb) / F418026 (400lb)	Cover
J	F417011 (120lb) / F417009 (400lb)	Follower plate

#### BIJUR DELIMON INTERNATIONAL

(919) 465 4448 LOCAL  
 (800) 631 0168 TOLL-FREE  
 (919) 465 0516 FAX

[WWW.BIJURDELIMON.COM](http://WWW.BIJURDELIMON.COM)

1 Copley Parkway, Suite 104  
 Morrisville, NC 27560

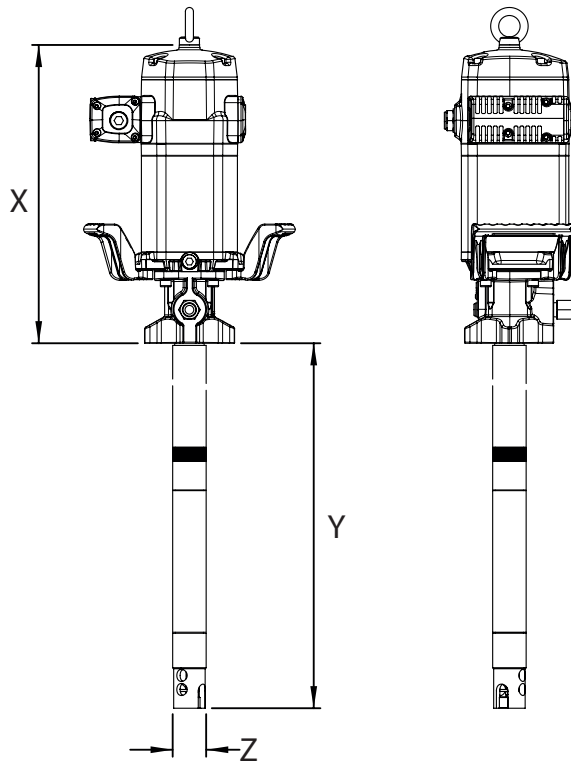
**36407 • R3 08/21**

# PM Pump

PM45 & PM60 Air-operated, Grease

## Accessories

CONTAINER TYPE	FOLLOWER	COVER
120 LB	F417011	F418017
400 LB	F417009	F418026



## Dimensional Schematics

Part #	X	Y	Z
F531211	17.6"	33.6"	2.0"
F531411	17.6"	33.6"	2.0"
F531421	17.6"	25.6"	2.0"
F531711	17.6"	33.6"	2.0"
F531721	17.6"	25.6"	2.0"
F531731	17.6"	16.1"	2.0"
F532811	18.1"	33.6"	2.0"
F532821	18.1"	25.6"	2.0"
F532131	18.1"	9.0"	2.75"

BIJUR DELIMON INTERNATIONAL

(919) 465 4448 LOCAL  
 (800) 631 0168 TOLL-FREE  
 (919) 465 0516 FAX

[WWW.BIJURDELIMON.COM](http://WWW.BIJURDELIMON.COM)

1 Copley Parkway, Suite 104  
 Morrisville, NC 27560

**36407 • R3 08/21**